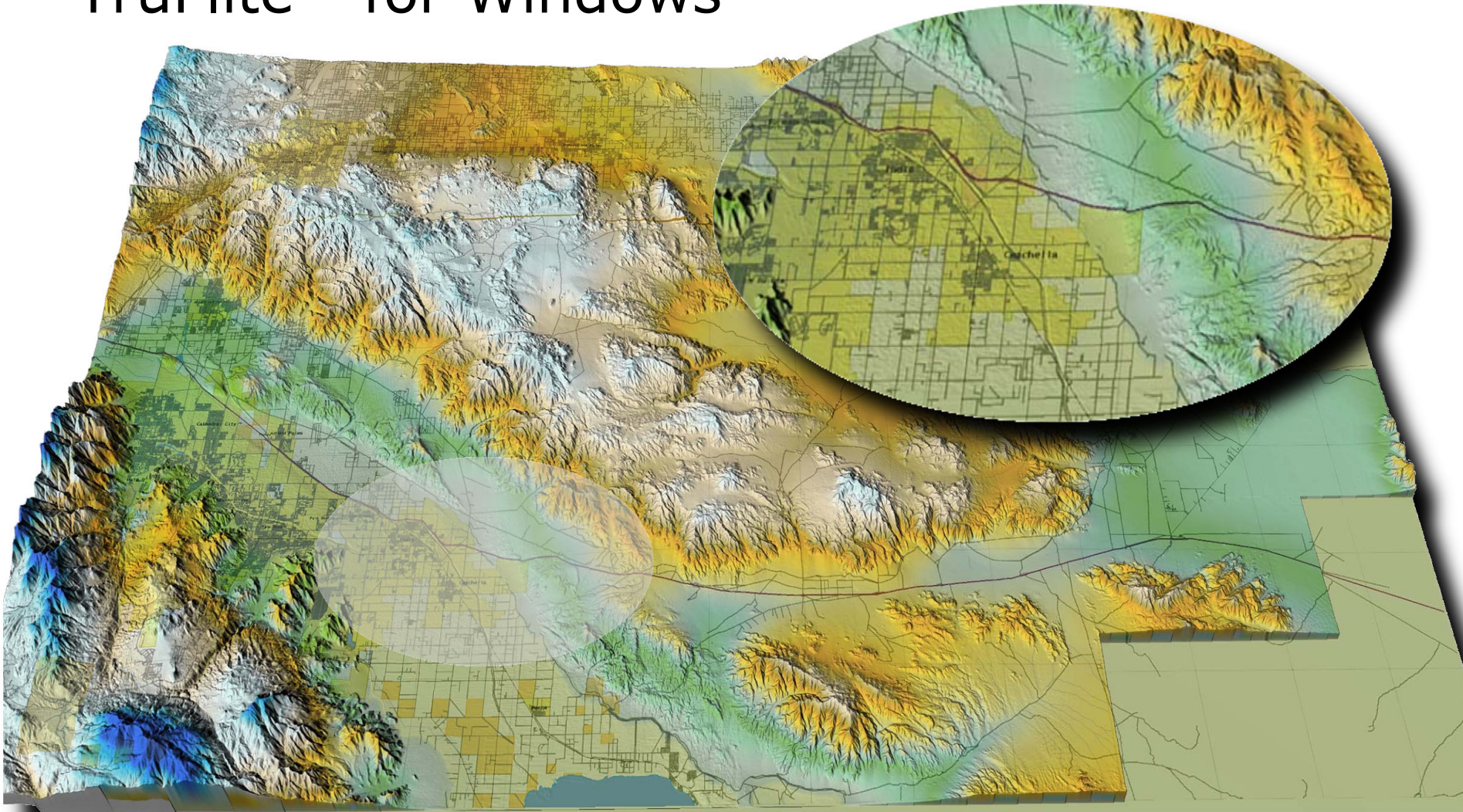


Come Fly with Us!

TruFlite™ for Windows



TruFlite™ for Windows

Check out the power of workstation graphics now available on your PC!

High end terrain modeling and visualization

FEATURES

- 16- and 32-bit versions
- Gouraud shaded texture mapping
- Unlimited polygons per image
- 24-bit resolution in elevation
- Context sensitive help
- Intuitive, easy-to-use control desk
- Set antialiasing/color interpolation
- Light and fog effects
- Fast wireframe preview
- Size or aspect ratio of texture file needs not be the same as of elevation file (automatic resizing at run-time)
- Masking, merging, rectification, convolution and resampling functions
- Produces single images or series of images for creating animations
- Input files: TGA format
- Output files: TGA and/or YUV
- Tiling of multiple DEMs done automatically
- Compile output to FLI/FLC, AVI, MOV or MPEG animations
- Move in straight lines or along a closed curve
- Define the flight path by clicking and dragging the waypoints directly on the map
- Elevation to color function

IMPORT FILTERS

- Erdas Imagine 1-Band Binary
- 24-bit uncompressed TGA
- USGS 3 arc second DEM
- 30 arc second binary BIL
- Idrisi 1-Band Binary
- 7.5, 15 minute DEM
- ASCII x/y/z
- ARC/Info DEMs
- SDTS (ISO 8211)

TRUFLITE IS:

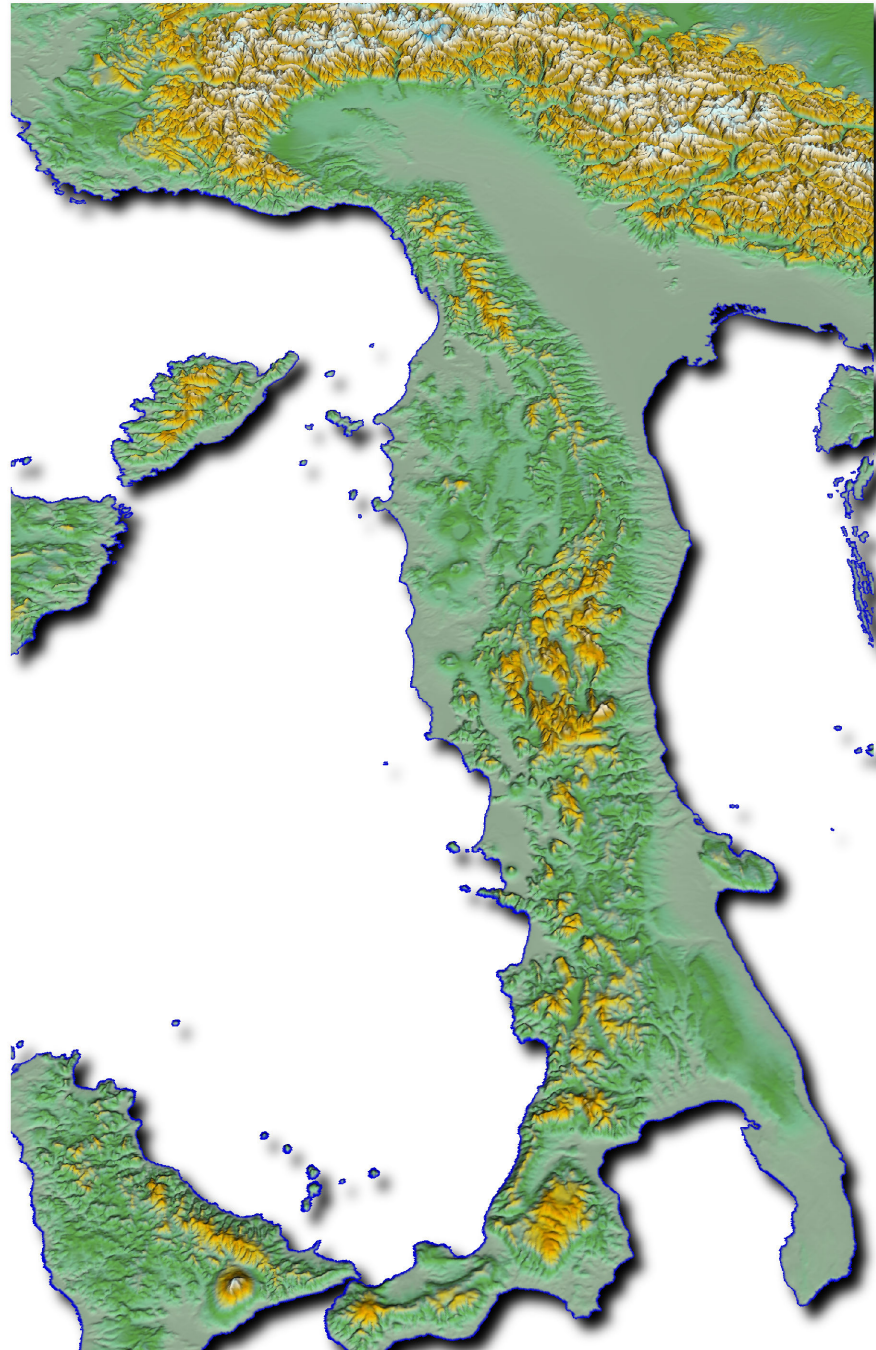
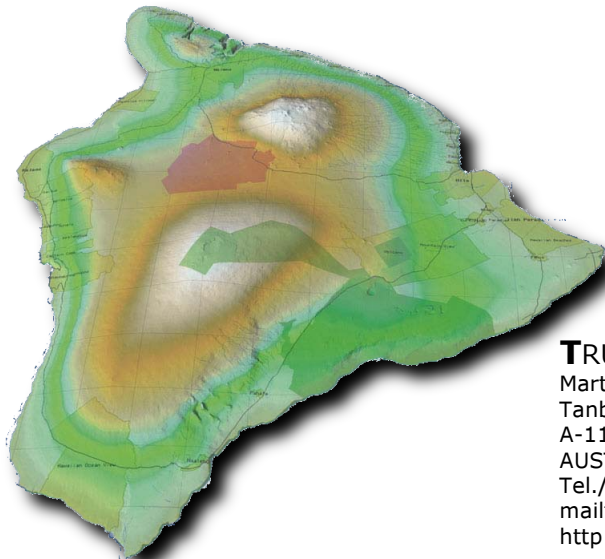
Martin D. Adamiker
Tanbruckgasse 23/50
A-1120 Wien
AUSTRIA
Tel./Fax: +43-1-810-9633
mailto:martin@truflite.com
http://www.truflite.com

AUTHORIZED DISTRIBUTOR:

Brenton White Company, LLC
135 12th Street SW
Loveland, CO 80537
USA
970-203-0300 Phone
970-215-2566 Cell
970-203-0760 Fax
mailto:brenton@brentonwhite.com
http://www.brentonwhite.com/truflite

PRICE

Single user commercial: US\$ 295
Single user educational: US\$ 195
Site license commercial: US\$ 2950
Site license educational: US\$ 1950



TruFlite™ for Windows